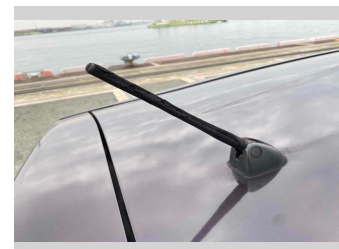
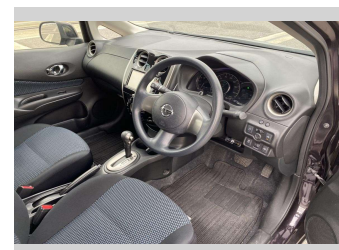
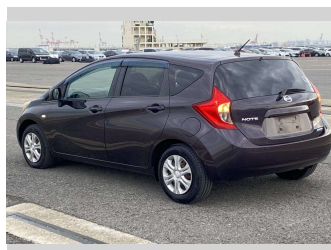
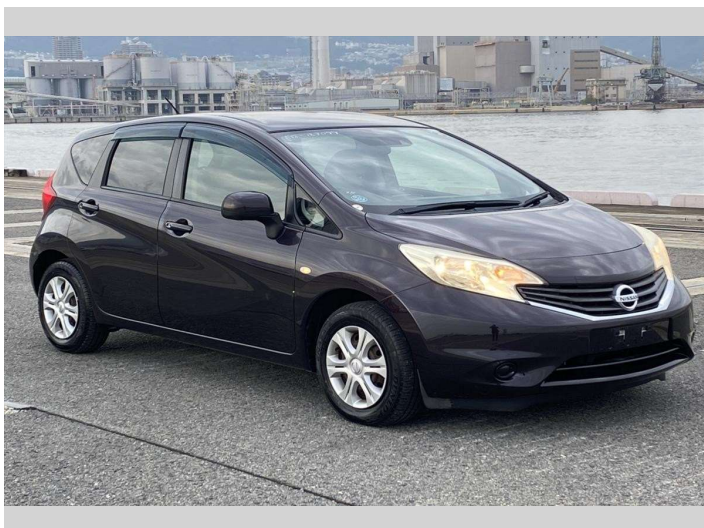



2013 Nissan Note XDIG-S EMERGENCY BRAKE




Purchase Price **POA**
Includes GST, Registration & Licensing

Finance may be available on this vehicle. Ask one of our friendly staff for more information.



Gain peace of mind with Mechanical Breakdown Insurance. **Ask us how.**



Top features

- » Air Con
- » CD Player
- » ESC
- » Smart Key

Body Style
-

Odometer
136,007 km

Engine
1200 cc

Fuel Type
Petrol

Transmission
CVT Auto

Wheels
-

VIN
-

Interior
-

Safety
-

Reg No.
-

Ext Colour
Purple

History
-

Seats
5 seats

CO2 Emissions
-

Energy Economy
-

Stock ID: 3989



Mitchell Motor Court | Phone 03 453 0011 | Email mitchellmc@xtra.co.nz
299 Kaikorai Valley Road, Dunedin 9011, New Zealand
www.mitchellmotorcourt.co.nz