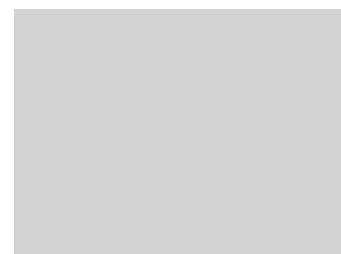
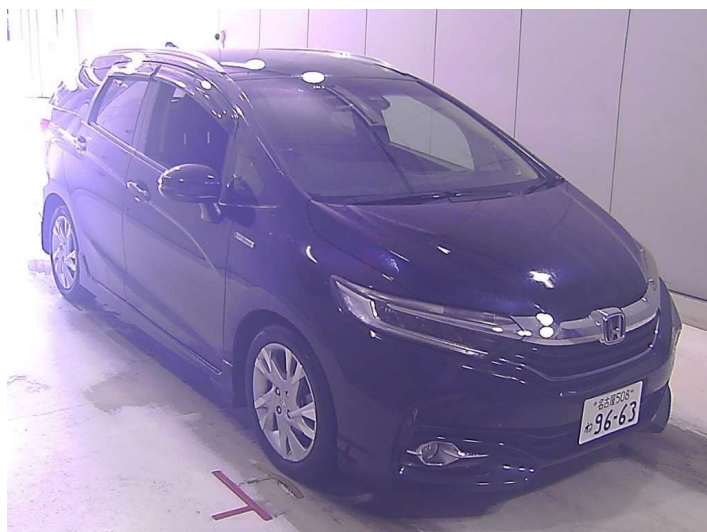



2016 Honda SHUTTLE HYBRID Z STYLE EDITION




Purchase Price **POA**
Includes GST, Registration & Licensing

Finance may be available on this vehicle. Ask one of our friendly staff for more information.



Gain peace of mind with Mechanical Breakdown Insurance. **Ask us how.**



Top features
None Listed

Body Style
Hatchback

Odometer
115,000 km

Engine
1500 cc

Fuel Type
-

Transmission
CVT Auto

Wheels
-

VIN
7AT08G2YX24038342

Interior
-

Safety



Based on 2024 VSRR rating

Reg No.

-

Ext Colour
DARKBLUE

History

-

Seats

-

CO2 Emissions
★★★★☆
100 grams/km

Energy Economy
★★★★☆☆

Annual fuel cost of \$1,690
4.3L per 100km

Cost per year is an estimate based on petrol price of \$2.80 per litre and an average distance of 14000 km. Emissions and Energy Economy figures standardised to 3P WLTP.

Stock ID: 3986